

La Cholla Airpark • Pilot Operating Procedures

GENERAL INFORMATION

La Cholla Airpark is a private residential airpark. The runway is for the use of Residents, Associate Members and Guests. Transient aircraft are welcome on a Prior Permission basis.

TRANSIENT	MUST complete the Prior Permission Request form and verify aircraft insurance.
INSURANCE	All aircraft must carry liability coverage as detailed in the Prior Permission Request form. Be sure to check the box verifying insurance.
LEGAL	All aircraft must be operated in strict accordance with the Aircraft Flight Manual (AFM), or Pilot's Operating Handbook (POH), and Federal Aviation Regulations (FARS)
PROHIBITED	<ul style="list-style-type: none"> • JETS - Exception - <i>FAR Part 36 Stage 3 or 4 aircraft operated by Homeowners ONLY</i> • FAR Part 135 Operations • Gliders and Part 103 aircraft • Aerobatic flight in the traffic area (5 sm. radius of the Airport) • Intersection takeoffs
TAKEOFFS AND LANDINGS	<p>Normal takeoffs and landings only, no simulated emergency operations</p> <p>Touch and Goes limited to 3 per day</p>
FUEL	100LL - Self service is available. VISA and Master Card accepted.
PARKING	Overnight transient parking \$5.00. Fee envelopes and mail slot located at the Clubhouse.
TRAFFIC PATTERN	<ul style="list-style-type: none"> • All Aircraft - Left traffic at 4000' MSL pattern altitude • Helicopters - Per FAR 91.126, "Each pilot of a helicopter...must avoid the flow of fixed-wing aircraft". A touchdown mark "H" is on the runway at the Beech intersection near the main ramp.
RUNWAY	<p>Runway 01/19 • Asphalt 4500' x 44'</p> <p>DAY - Runway 19 is the preferred runway for day operations</p> <p>NIGHT - Runway 01 is the preferred runway for night landings (due to the proximity of the Tortolita Mountains to the North)</p> <p>Runway Slope: 1.3 % gradient downwards to the South.</p>
RADIO	MULTICOM 122.9 - All aircraft are required to use radio communications!
LIGHTING	Runway lights, VASI and automated Weather are pilot controlled on 122.9.
WEATHER	<p>3 CLICKS (15 minute timer. Operates day or night)</p> <ul style="list-style-type: none"> Runway Lights Runway 01 VASI Beech Way and Runway intersection Red Flashing entrance warning lights <p>4 CLICKS</p> <ul style="list-style-type: none"> Runway Lights AND Automated weather
GROUND OPS	<ul style="list-style-type: none"> • All roadways are considered taxiways and aircraft have the right-of-way over vehicles at all times. • Taxiways must not be obstructed at any time, either on the roadways or in the common area. • All aircraft must be tied down. La Cholla Airpark accepts no liability for the security of aircraft. • Be alert for Deer and Javelina crossing the runway.

La Cholla Airpark • Pilot Operating Procedures

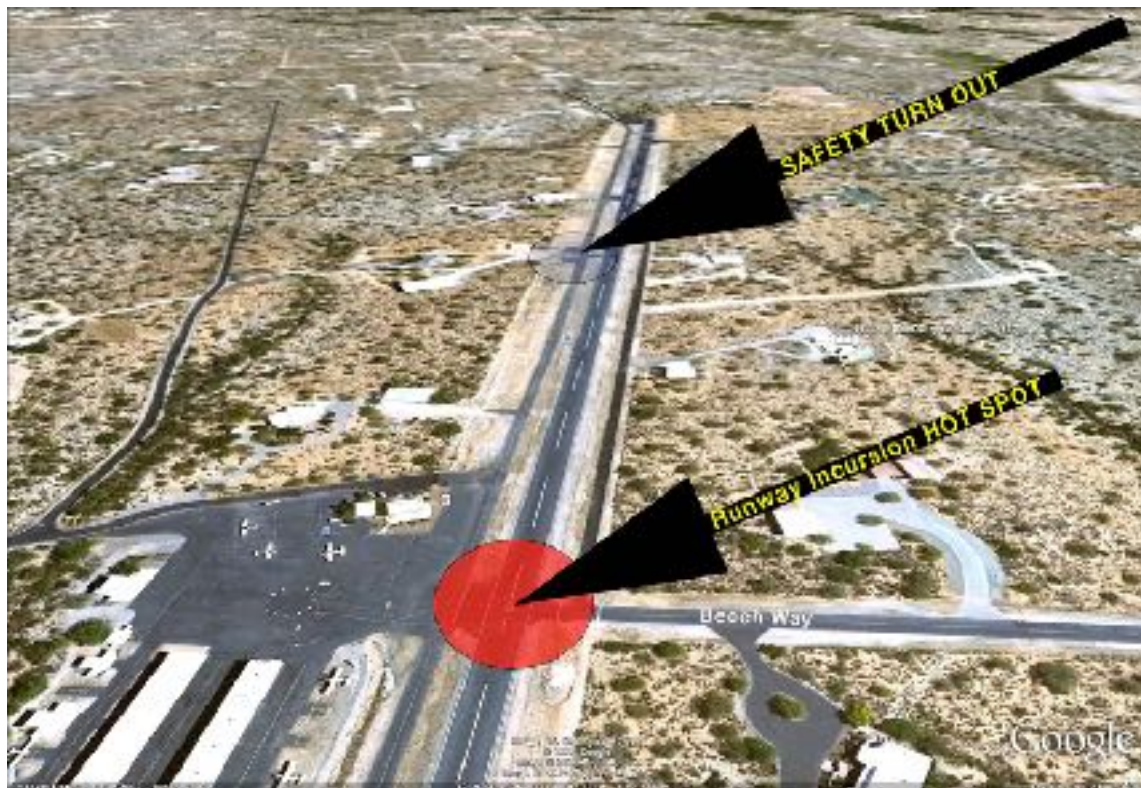
RUNWAY INCURSION PREVENTION PROGRAM

CAUTION - The taxiway and runway centerlines are only 61' apart. If two 50' wingspan aircraft pass each other, they will only have 11' of clearance between wing tips. A runway excursion could result in collision with an aircraft on the taxiway.

MONITOR 122.9 - **Avoid taxiway operations when an aircraft is on the runway.** A "Safety Turn Out" is provided between the ramp and the 19 approach end. Use this TURN OUT to provide additional clearance from aircraft on the runway.

Runway 19 has a crown toward the North end. This makes it difficult to see an aircraft at the approach end of 19 from the midfield area.

GATES	Runway entrance gates are installed at all runway entrances.
HOT SPOT	The intersection of Beech Way and the Runway is a known Runway Incursion HOT SPOT . Only aircraft should cross from Beech to the west ramp.
RADIO CALLS	Announce your position and intentions both on the ground and inflight.
LIGHTING	Activate the runway lights (both day and night) using 3 clicks on 122.9. This alerts other aircraft and turns on the Beech Way red flashing runway entrance lights.
LANDING LIGHTS	Turn on Landing Lights (both day and night) to increase your visibility to other aircraft and vehicles.
VEHICLES	Vehicles are only allowed to CROSS the runway with prior Airpark permission. Vehicles are not to OPERATE on the runway at any time. Click HERE for Runway Crossing Policy.



La Cholla Airpark • Pilot Operating Procedures

GROUND OPERATIONS

TAXI	<p>Monitor 122.9 - As soon as possible after start for traffic awareness.</p> <p>Announce - Taxi Out, Taxi In and Clear of runway.</p> <p>Back Taxi - If back taxi is utilized, Announce Intentions and Turn On Landing Lights</p>
-------------	---

DEPARTURE PROCEDURES

LIGHTS	Turn on Landing Lights
LIGHTING	Activate the runway lights (both day and night) using 3 clicks on 122.9. This alerts other aircraft and turns on the Beech Way red flashing runway entrance lights.
TURNS	<p>Runway 19 - No turns until passing Moore Road or reaching 3700' MSL whichever occurs <u>later</u>.</p> <p>Runway 01 No turns until passing Turtle Dove Lane or reaching 3700' MSL whichever occurs <u>later</u>.</p>
RADIO	Announce departure runway and direction of flight on 122.9
NOISE	Reduce engine RPM as soon as it is safe to do so. Please fly quietly.

ARRIVAL PROCEDURES

LIGHTS	Turn on Landing Lights
LIGHTING	Activate the runway lights (both day and night) using 3 click on 122.9. This alerts other aircraft and turns on the Beech Way red flashing runway entrance lights.
PATTERN	<ul style="list-style-type: none"> • A 45-degree entry to downwind for all runways is recommended. • If a pattern entry from the “wrong” side is necessary, enter crosswind mid-field at pattern altitude. Give way to aircraft already established on downwind. • Over flight of the Airpark for wind checks should be flown no lower than 4,500' MSL (500 feet above pattern altitude). • Straight-in arrivals are permissible, but must give priority to aircraft in the regular pattern.
RADIO	<ul style="list-style-type: none"> • Reporting points: 5 to 10 miles out with aircraft location, altitude and intentions, entering the 45-degree to downwind, turning downwind, base and final – 2 mile final if a straight-in. • Announce when clear of the runway.

QUICK REFERENCE

La Cholla Airpark 57AZ
 Elevation: **2940 MSL**
 Runways 1 / 19
 Left Traffic 1 / 19

MULTICOM: **122.9**
 Pattern Altitude: **4000 MSL**
 Asphalt 44' x 4500'

LIGHTING - Runway lights, VASI and automated Weather are pilot controlled on 122.9.

3 CLICKS (15 minute timer. Operates day or night)
 Runway Lights and Runway 1 VASI

Beech Way and Runway intersection Red Flashing entrance warning lights

4 CLICKS

Lights **AND** Automated Weather

- **Turn On Landing Lights** (day and night)
- **Activate Runway Lights** (day and night)
- **Avoid taxiway ops with aircraft on runway**

La Cholla Airpark • Pilot Operating Procedures



RUNWAY 19 TRAFFIC PATTERN



RUNWAY 01 TRAFFIC PATTERN

La Cholla Airpark • Pilot Operating Procedures

RUNWAY VEHICLE CROSSING POLICY

BACKGROUND - There have been several close encounters between aircraft and vehicles on the runway. Fortunately no accidents. To mitigate this risk, gates were installed at all runway entrances and this policy was written to limit vehicle crossings. This policy does not restrict Pedestrian and Bicycle crossing.

VEHICLE	Vehicles are defined as a Car, Truck, Golf Cart or ATV
CROSSING	Vehicles are only allowed to CROSS the runway with prior Airpark permission.
OPERATING ON	Vehicles are prohibited from OPERATING ON the runway at any time.
RADIO	Vehicles <u>must</u> MONITOR frequency 122.90 and ANNOUNCE when crossing.
VEHICLE CROSSING PROCEDURE	Before crossing, come to a complete stop, observe the runway and final approach paths at both runway ends for aircraft. When clear, announce crossing on 122.90, then proceed across. Never try to "beat" a moving aircraft that is taking off or landing.
PEDESTRIAN/BICYCLE CROSSING PROCEDURE	Pedestrians and Bicycles may cross with caution.
OBTAINING PERMISSION	Homeowners (Shareholders) may receive permission to cross the runway by completing the "Runway Vehicle Crossing Permission Form" and returning it to the Airpark office.
CAUTION	Runway 19 has a crown toward the North end. This makes it difficult to see an aircraft at the approach end of 19 from the midfield area.

La Cholla Airpark Runway Vehicle Crossing Permission Form Homeowners (Shareholders) Only

In accordance with La Cholla Airpark policy, only authorized persons are permitted to cross the runway in a vehicle. Completion of this form constitutes authorization and "prior permission". This form will be retained in the Airpark's files. Also a list of those authorized to cross the runway will be maintained on the Airpark website.

Name	
Street Address	
City, State ZIP	
Phone	
E-Mail	

By signing I agree to operate in accordance with La Cholla Airpark Runway Crossing Policy as detailed above.

PRINT NAME

SIGNATURE

DATE